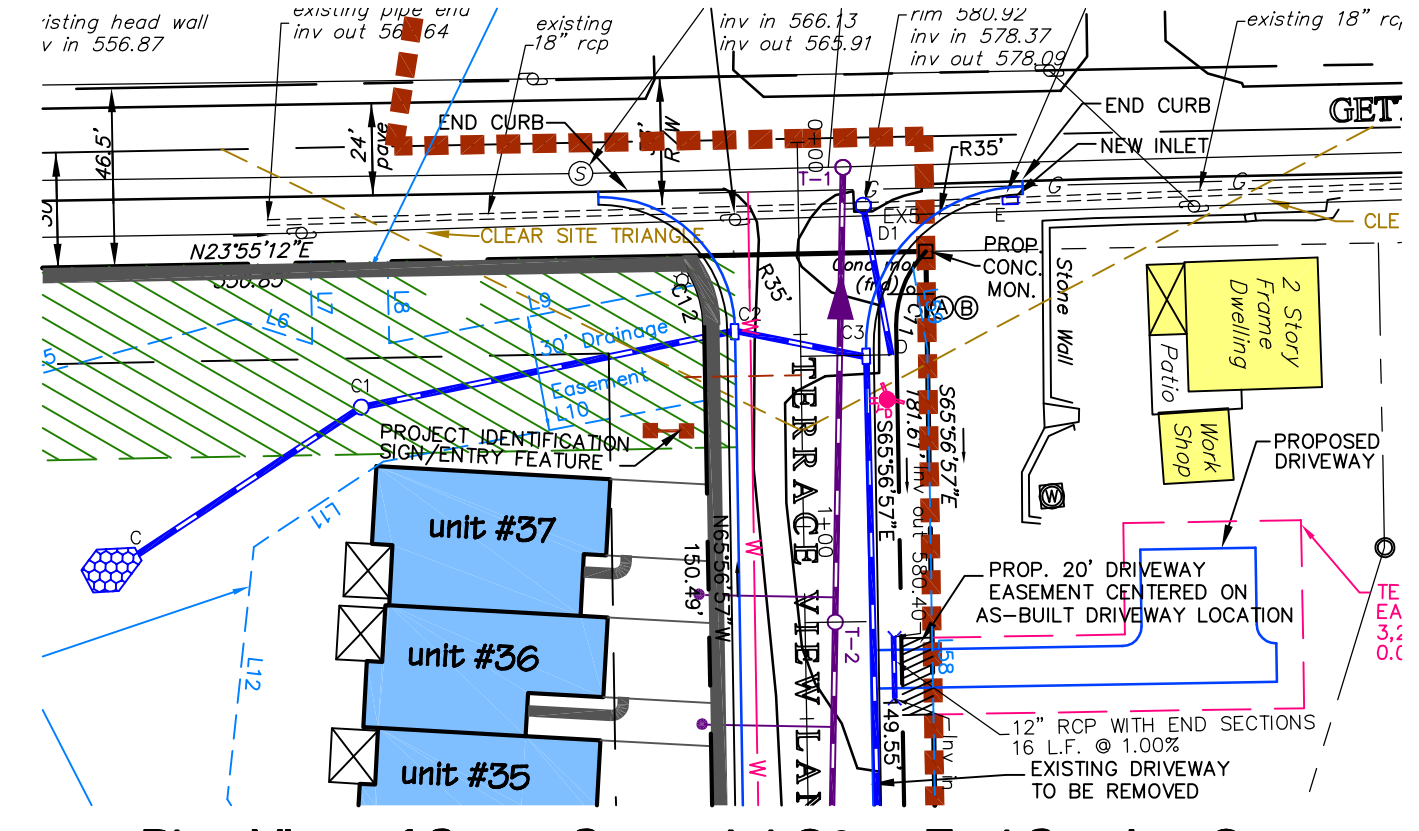


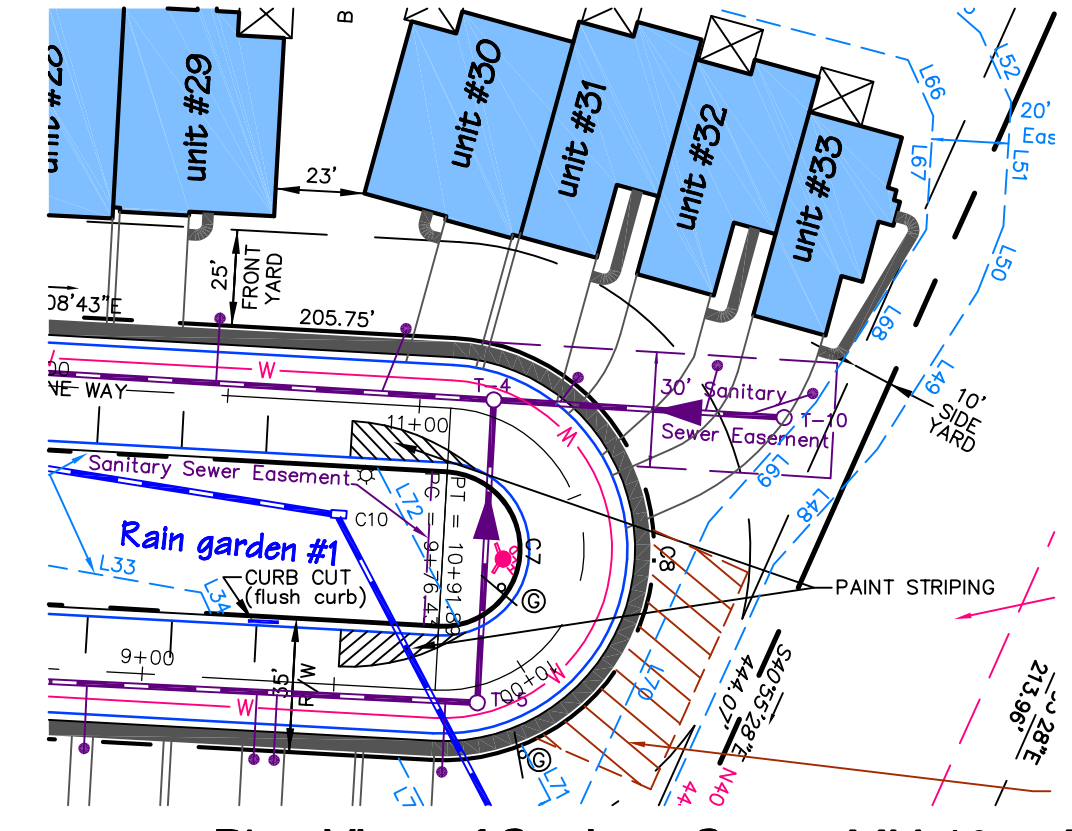
Plan View of Storm Sewer Inl B4 to Ex. Inl 3

Scale: 1"=50'



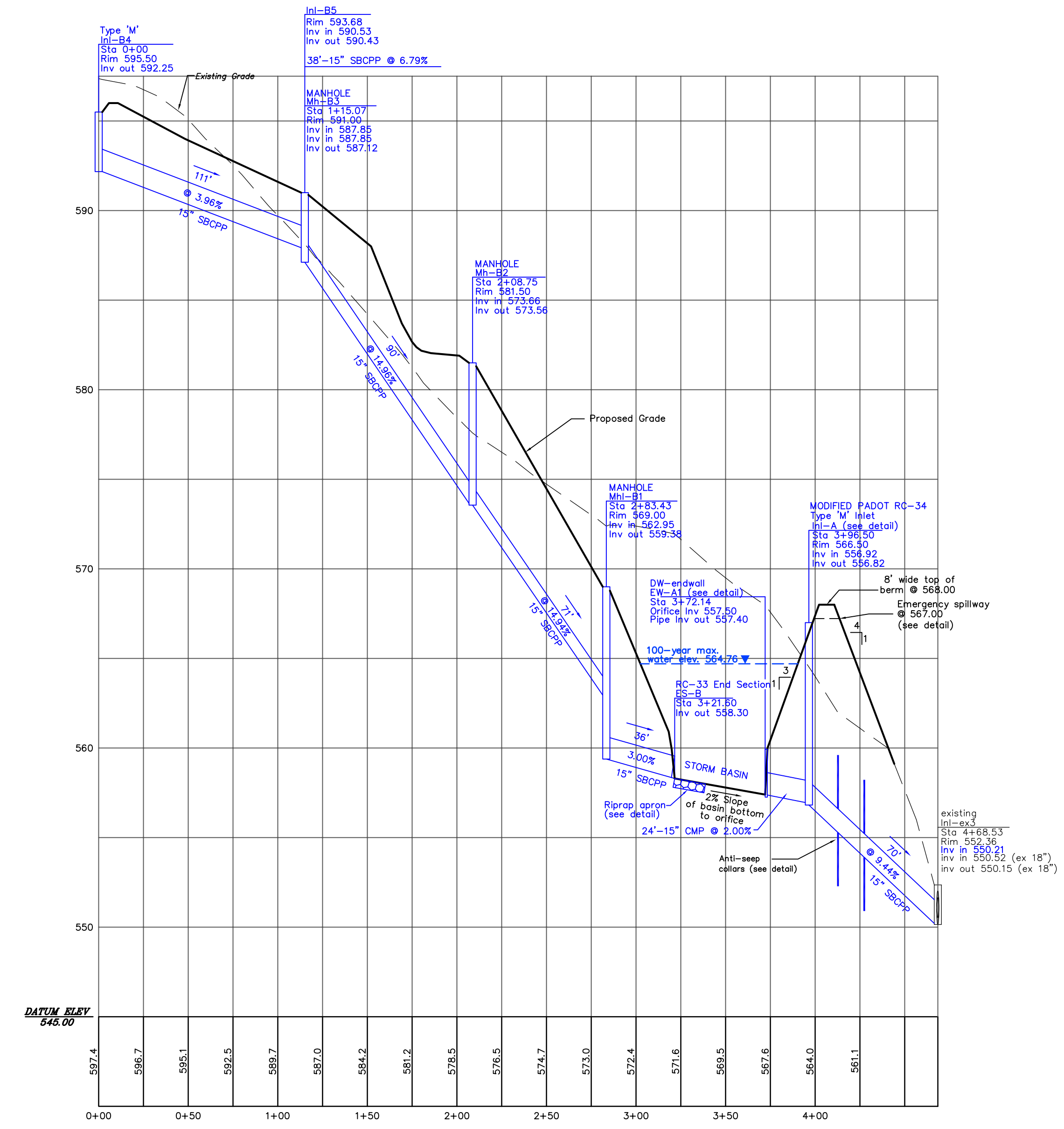
Plan View of Storm Sewer Inl C2 to End Section C

Scale: 1"=50'



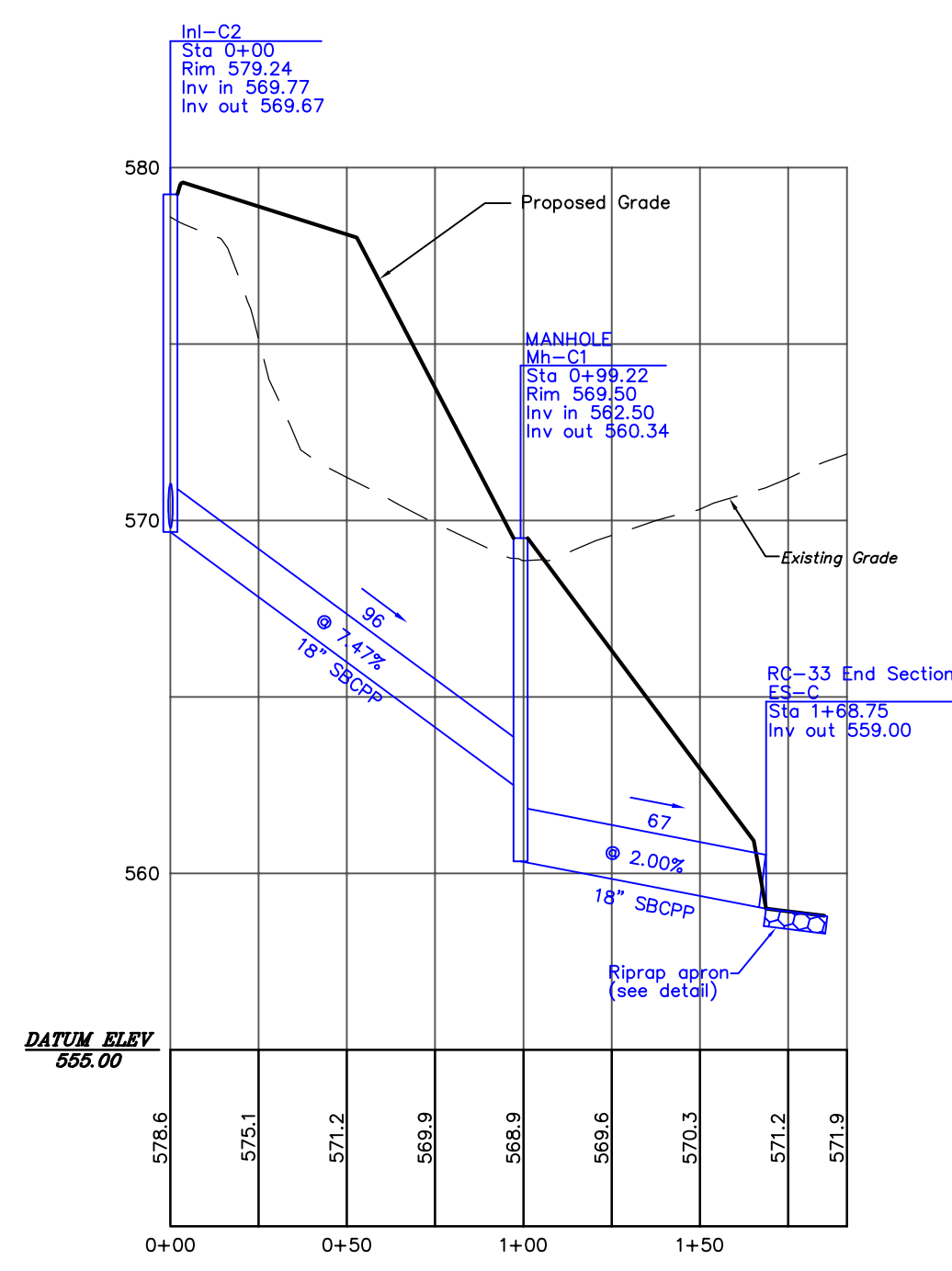
Plan View of Sanitary Sewer MH 10 to MH 4

Scale: 1"=50'



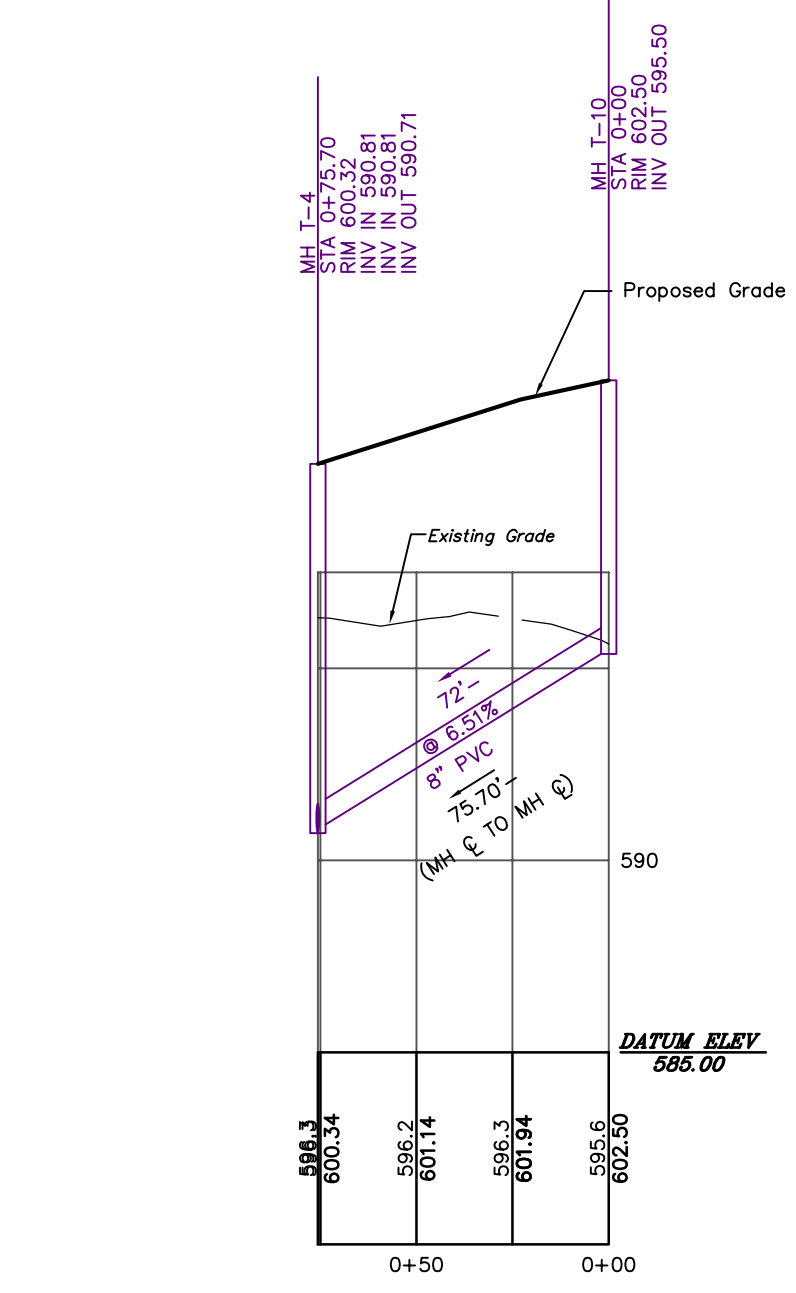
Centerline Profile of Storm Sewer Inl B4 to Ex. Inl 3

Scale: Horz: 1"=50'
Vert: 1"=5'



Centerline Profile of Storm Sewer Inl C2 to End Section C

Scale: Horz: 1"=50'
Vert: 1"=5'

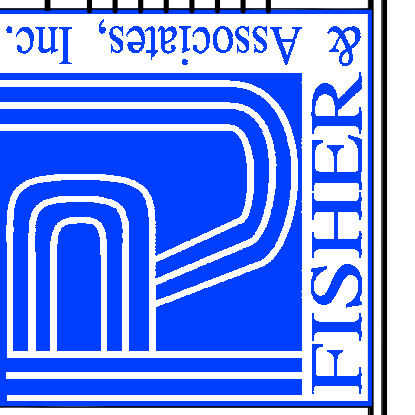


Centerline Profile of Sanitary Sewer MH T-10 to MH T-4

Scale: Horz: 1"=50'
Vert: 1"=5'

- NOTES:
- All inlets are PaDOT RC-34 with Rolled curb inlet top, unless otherwise noted.
 - SBCPP = Smooth Interior Corrugated Plastic Pipe
 - Inlets and storm manholes over 5 feet in depth shall have PaDOT RC-39 steps.
 - In areas of fill, the fill must be compacted to 95% or greater of the maximum dry density as determined by ASTM 698 standard proctor prior to the placement of sanitary facilities.

No.	REVISION	COMMENTS	DATE
1			05/19/11
2			
3			
4			
5			
6			



R. J. FISHER & ASSOCIATES, INC.
 LAND PLANNING & DEVELOPMENT DESIGN ■ PROPERTY & TOPO. SURVEYS
 LANDSCAPE ARCHITECTURE ■ WETLANDS IDENTIFICATION & DELINEATION
 1546 BRIDGE STREET, NEW CUMBERLAND, PA. 17070
 (717) 774-7654 FAX (717) 774-7190

PLAN AND PROFILE OF
 MISCELLANEOUS STORM AND SANITARY SEWERS
 FOR
**THE TERRACES
 AT SHEPHERDSTOWN**
 LOCATED IN
 UPPER ALLEN TOWNSHIP, CUMBERLAND COUNTY, PA.